

WINDOWS ICIN SAFE EXAM BROWSER (SEB) KURULUMU

SEB sınav esnasında bilgisayarda sınav dışında herhangi başka bir sekme veya sayfa açılmasını engelleyen bir tarayıcıdır. Ara sınavlarınızı ve final sınavınızı alabilmek için SEB'in sınavda kullanacağınız bilgisayarda yüklü olması gerekmektedir. Kurulum için aşağıdaki adımları takip ediniz:

1. Arama motorunuza safe exam browser yazın.

2. Safexambrowser.org sitesine gidin.

[Tümü](#) [Görseller](#) [Videolar](#) [Haberler](#) [Alışveriş](#) [Daha fazla](#) [Ayarlar](#) [Araçlar](#)

Yaklaşık 44.000.000 sonuç bulundu (0,37 saniye)

safexambrowser.org [Bu sayfanın çevirisini yap](#)

[Safe Exam Browser - News](#)

Safe Exam Browser (SEB) is being used to secure exams running in various commercial and open source e-assessment solutions and learning management ...

Download

Please note our new update policy:
We will only support the latest ...

Windows User Manual

The following manual explains how
to configure and use SEB ...

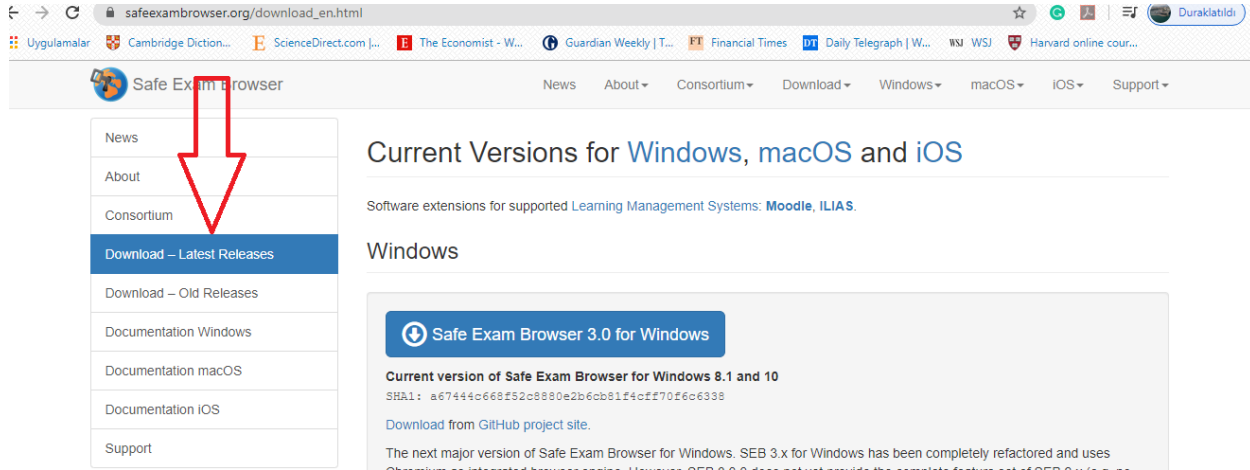
Overview

Safe Exam Browser is a web
browser environment to carry ...

macOS User Manual

SEB also detects attempts to
switch the user and displays a ...

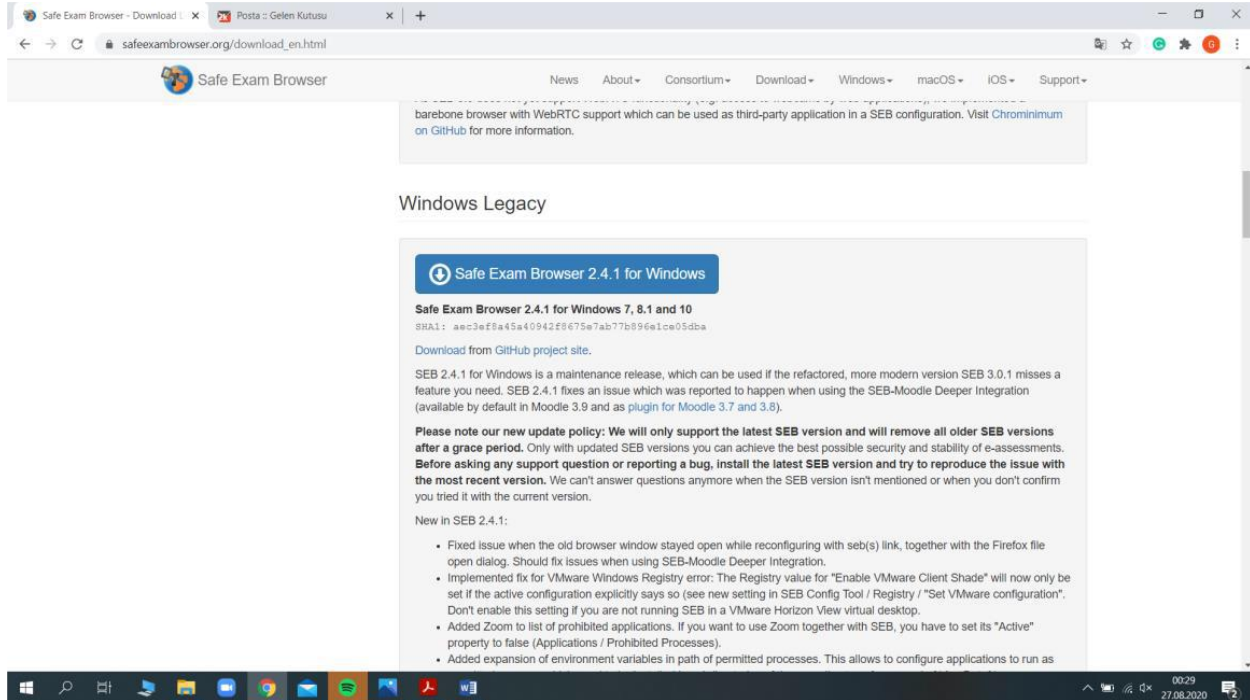
3. Download'a tıklayın.



The screenshot shows the Safe Exam Browser website. The navigation menu on the left includes: News, About, Consortium, Download – Latest Releases (highlighted with a red arrow), Download – Old Releases, Documentation Windows, Documentation macOS, Documentation iOS, and Support. The main content area is titled 'Current Versions for Windows, macOS and iOS'. Below this, there is a section for 'Windows' with a button for 'Safe Exam Browser 3.0 for Windows'. The text below the button states: 'Current version of Safe Exam Browser for Windows 8.1 and 10' and provides a SHA1 hash: 'a6744c668f52c8980e2b6cb81f4c6ff70f6c6338'. It also includes a link to 'Download from GitHub project site.' and a paragraph explaining that the next major version (SEB 3.x) is completely refactored and uses Chromium as an integrated browser engine. A list of new features and changes is provided:

- New, embedded browser engine (Chromium Version 79.0.3945.130 for SEB 3.0.0).
- Dedicated builds for 32-bit and 64-bit operating systems.
- Supports kiosk mode switch when reconfiguring (e.g. from Create New Desktop to Disabled Explorer Shell).
- Action Center (side menu) with same functionality as taskbar (i.e. access to applications and system controls).

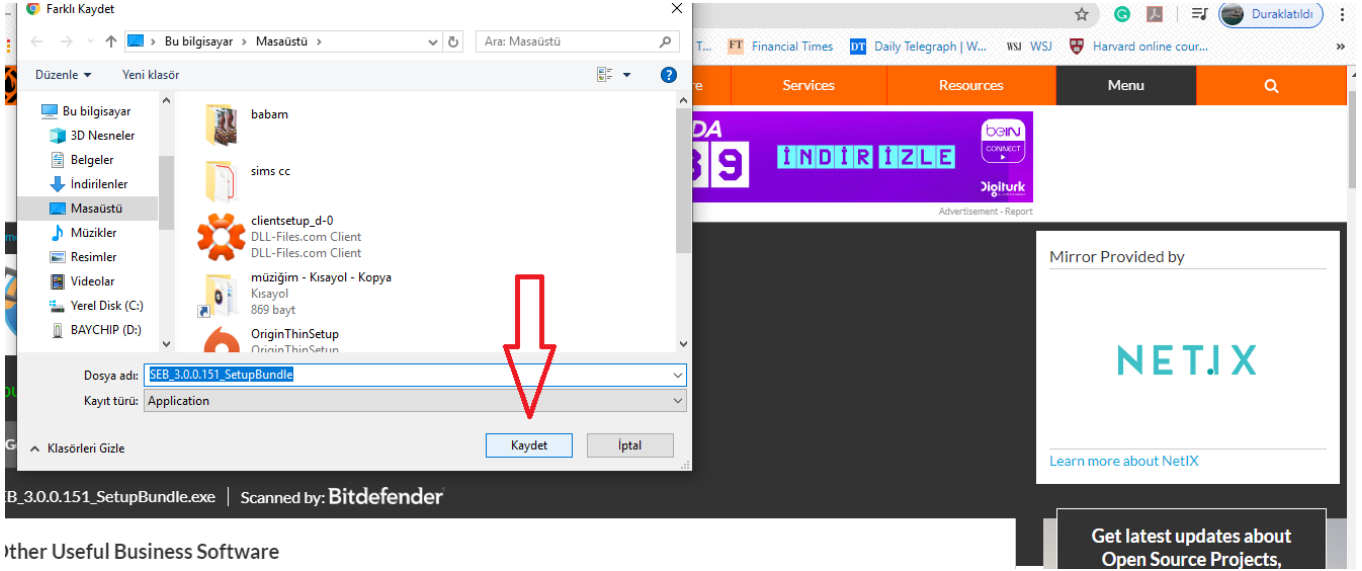
4. Açılan sayfada Safe Exam Browser 2.4.1'i indirin. (Safe Exam Browser 3.0.1 Windows 8 ve 10 içindir)



The screenshot shows the Safe Exam Browser website, specifically the 'Windows Legacy' section. The navigation menu is visible at the top. The main content area is titled 'Windows Legacy' and features a button for 'Safe Exam Browser 2.4.1 for Windows'. Below the button, the text states: 'Safe Exam Browser 2.4.1 for Windows 7, 8.1 and 10' and provides a SHA1 hash: 'aec3ef845a40942f0675e7ab77b896a1ce05dba'. It also includes a link to 'Download from GitHub project site.' and a paragraph explaining that SEB 2.4.1 is a maintenance release, which can be used if the refactored, more modern version SEB 3.0.1 misses a feature you need. SEB 2.4.1 fixes an issue which was reported to happen when using the SEB-Moodle Deeper Integration (available by default in Moodle 3.9 and as plugin for Moodle 3.7 and 3.8). A bolded note states: 'Please note our new update policy: We will only support the latest SEB version and will remove all older SEB versions after a grace period. Only with updated SEB versions you can achieve the best possible security and stability of e-assessments. Before asking any support question or reporting a bug, install the latest SEB version and try to reproduce the issue with the most recent version. We can't answer questions anymore when the SEB version isn't mentioned or when you don't confirm you tried it with the current version.' A list of new features and changes is provided:

- Fixed issue when the old browser window stayed open while reconfiguring with seb(s) link, together with the Firefox file open dialog. Should fix issues when using SEB-Moodle Deeper Integration.
- Implemented fix for VMware Windows Registry error: The Registry value for "Enable VMware Client Shade" will now only be set if the active configuration explicitly says so (see new setting in SEB Config Tool / Registry / "Set VMware configuration". Don't enable this setting if you are not running SEB in a VMware Horizon View virtual desktop.
- Added Zoom to list of prohibited applications. If you want to use Zoom together with SEB, you have to set its "Active" property to false (Applications / Prohibited Processes).
- Added expansion of environment variables in path of permitted processes. This allows to configure applications to run as

5. Karşınıza aşağıdaki gibi bir ekran çıkacak. İndirmeyi başlatmak için Kaydet butonuna basın.



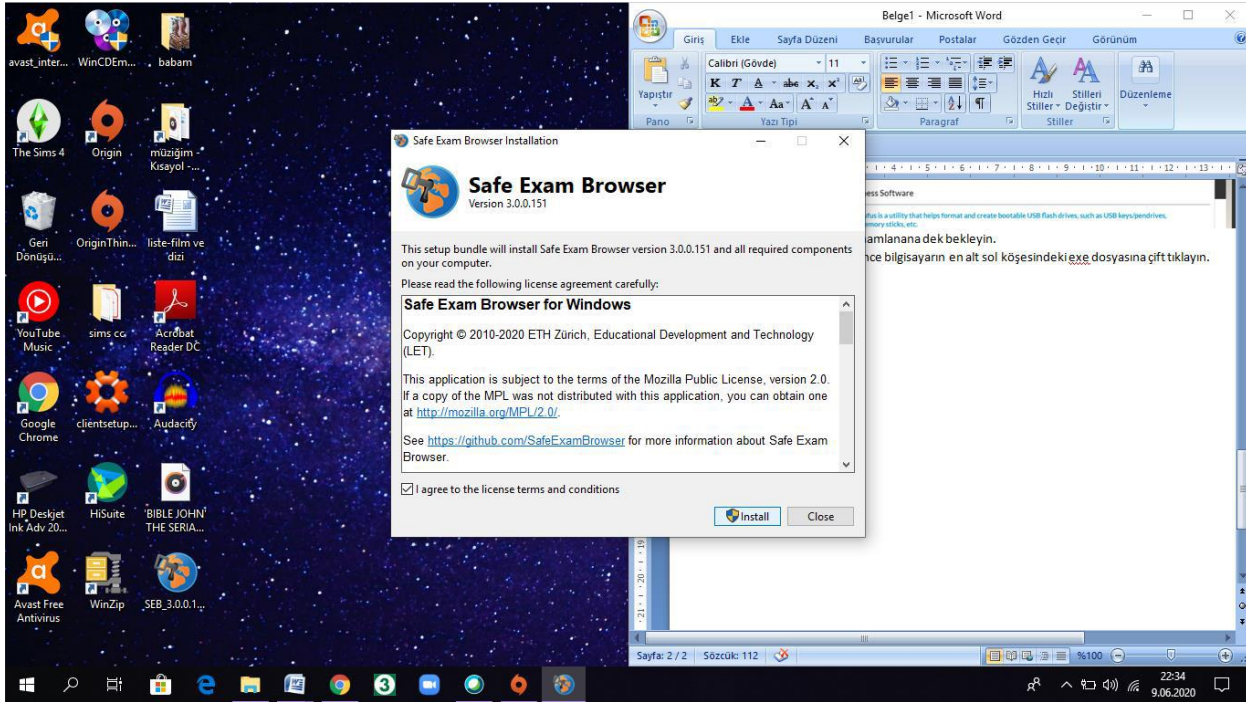
Other Useful Business Software

Get latest updates about Open Source Projects,

6. İndirme tamamlanana dek bekleyin.

İndirme bitince bilgisayarın en alt sol köşesindeki exe dosyasına çift tıklayın.

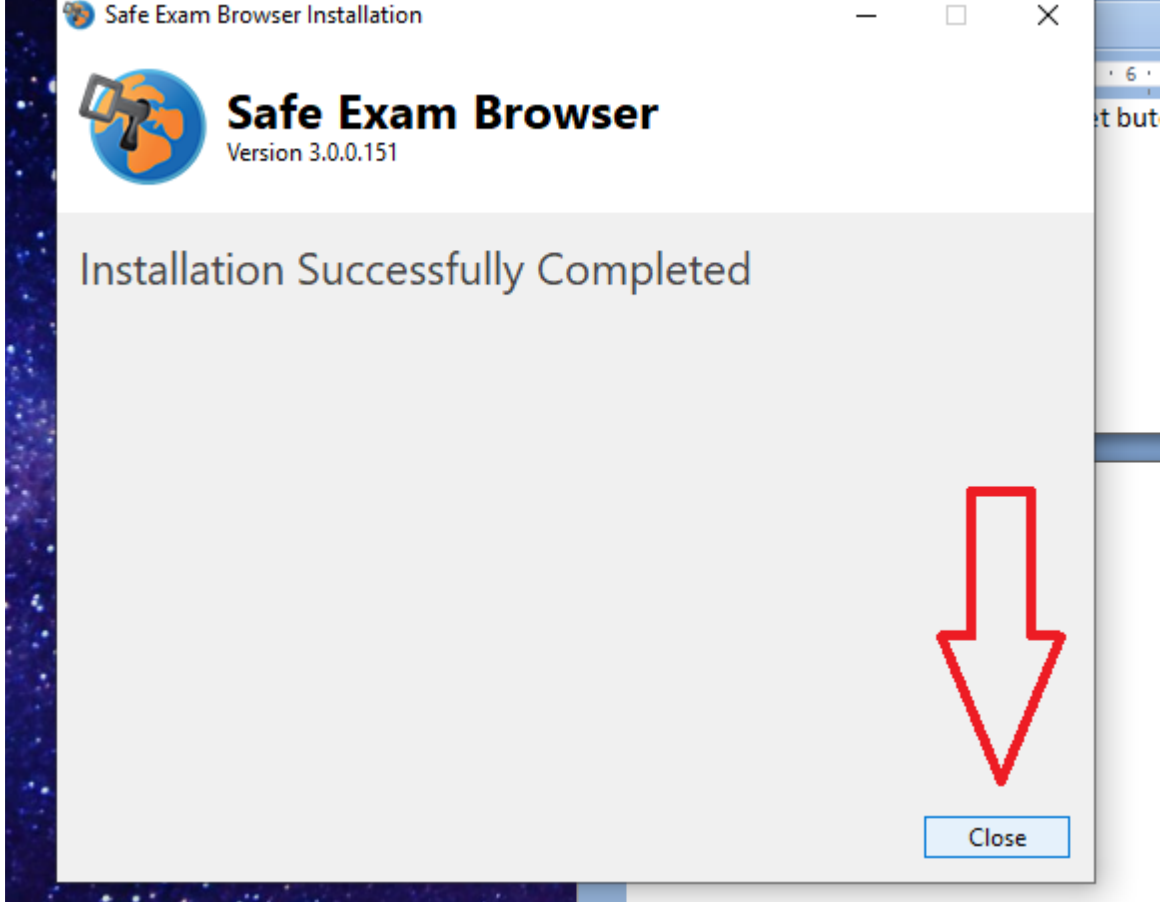
Karşınıza şu ekran çıkacak:



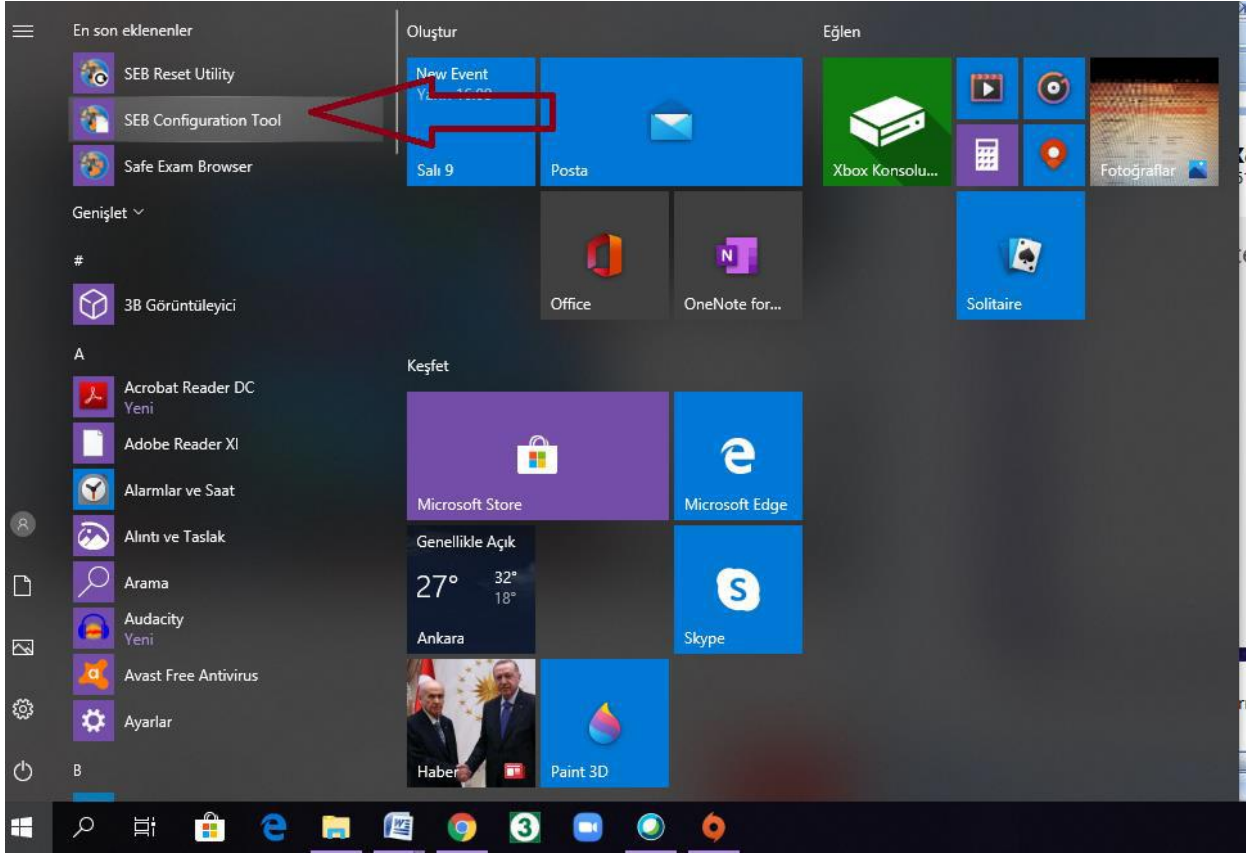
7. I agree to the licence terms... ile başlayan cümlemin başındaki kutucuğu tikleyin ve Install butonuna basın.

8. Karşınıza çıkan ekranda Evet butonuna basın.

9. Yükleme bitince karşınıza çıkan ekranda Close butonuna basın.

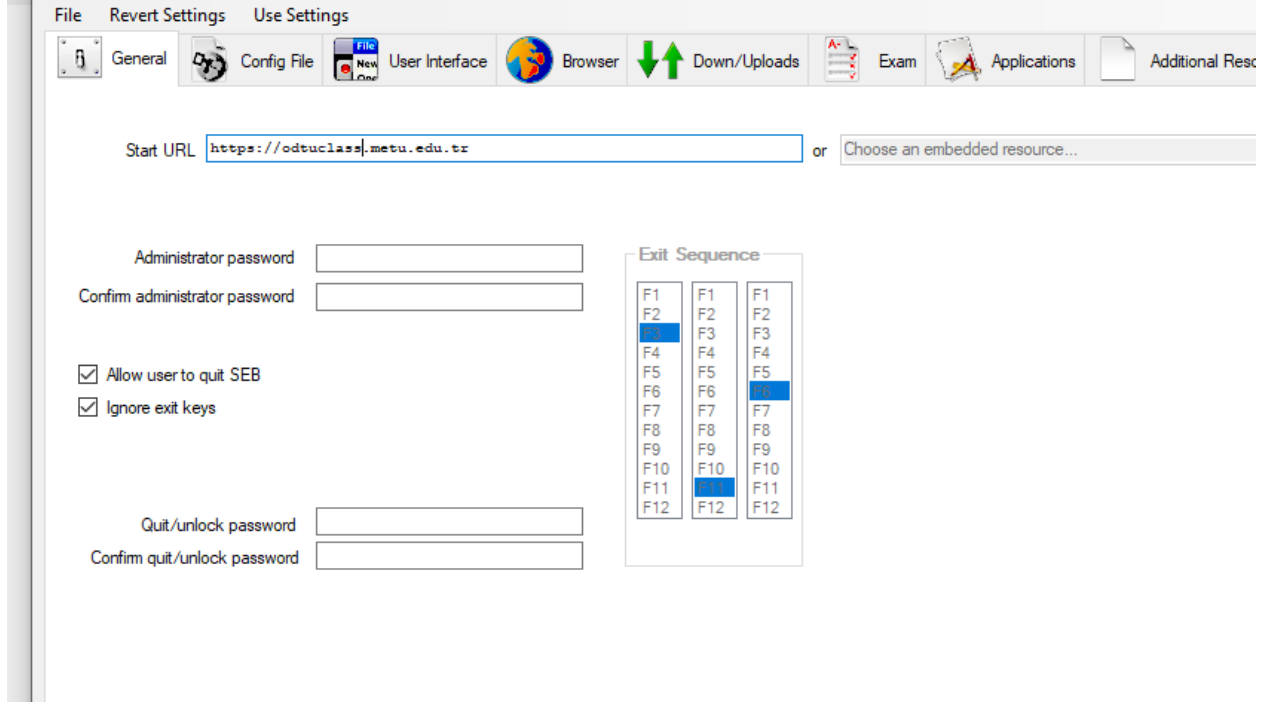


10. Bu aşamalardan sonra, bilgisayarınızın menüsüne giderek SEB Configuration Tool'u açın.

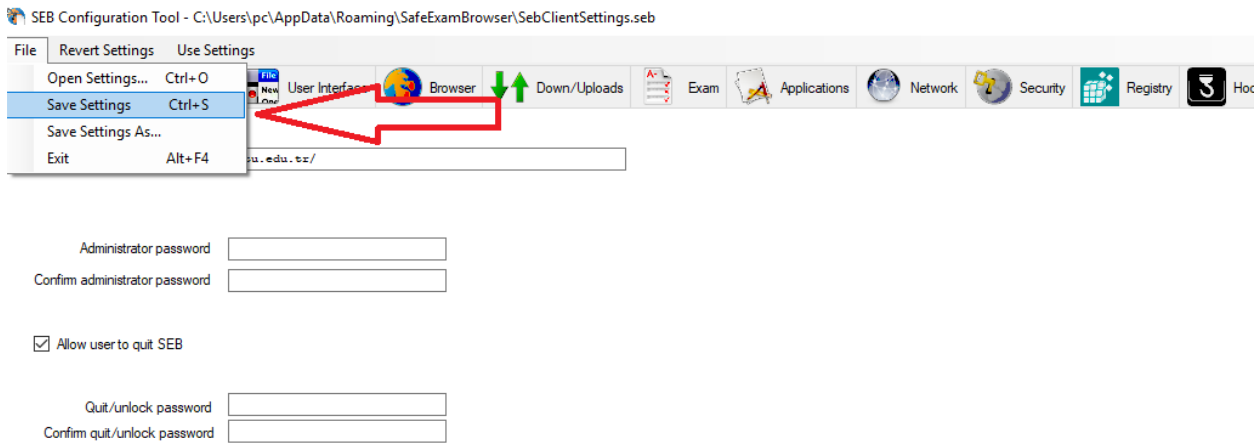


11. Start URL kısmındaki adresi değiştirmeniz gerekiyor. Buraya şu adresi yazın:

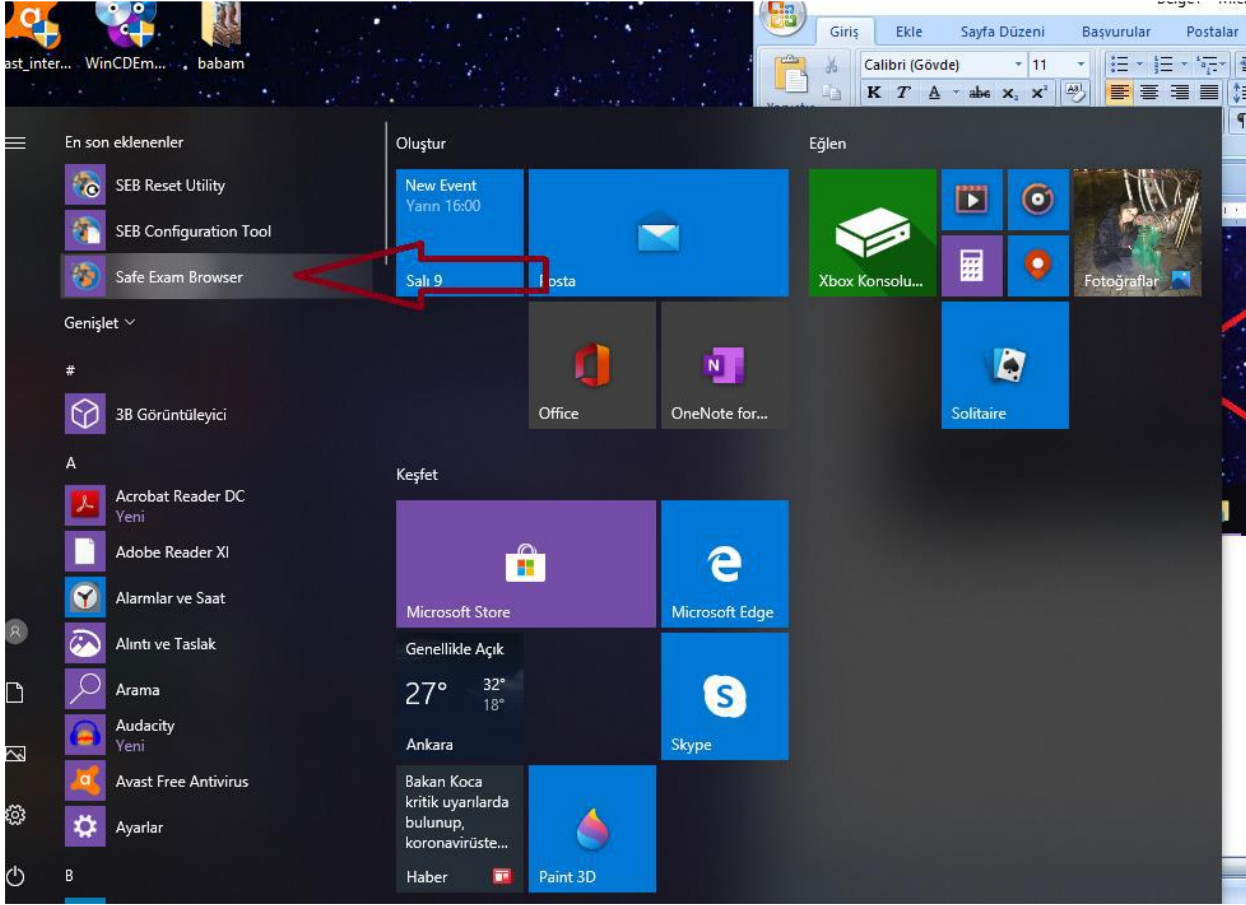
<https://odtuclass.metu.edu.tr/>



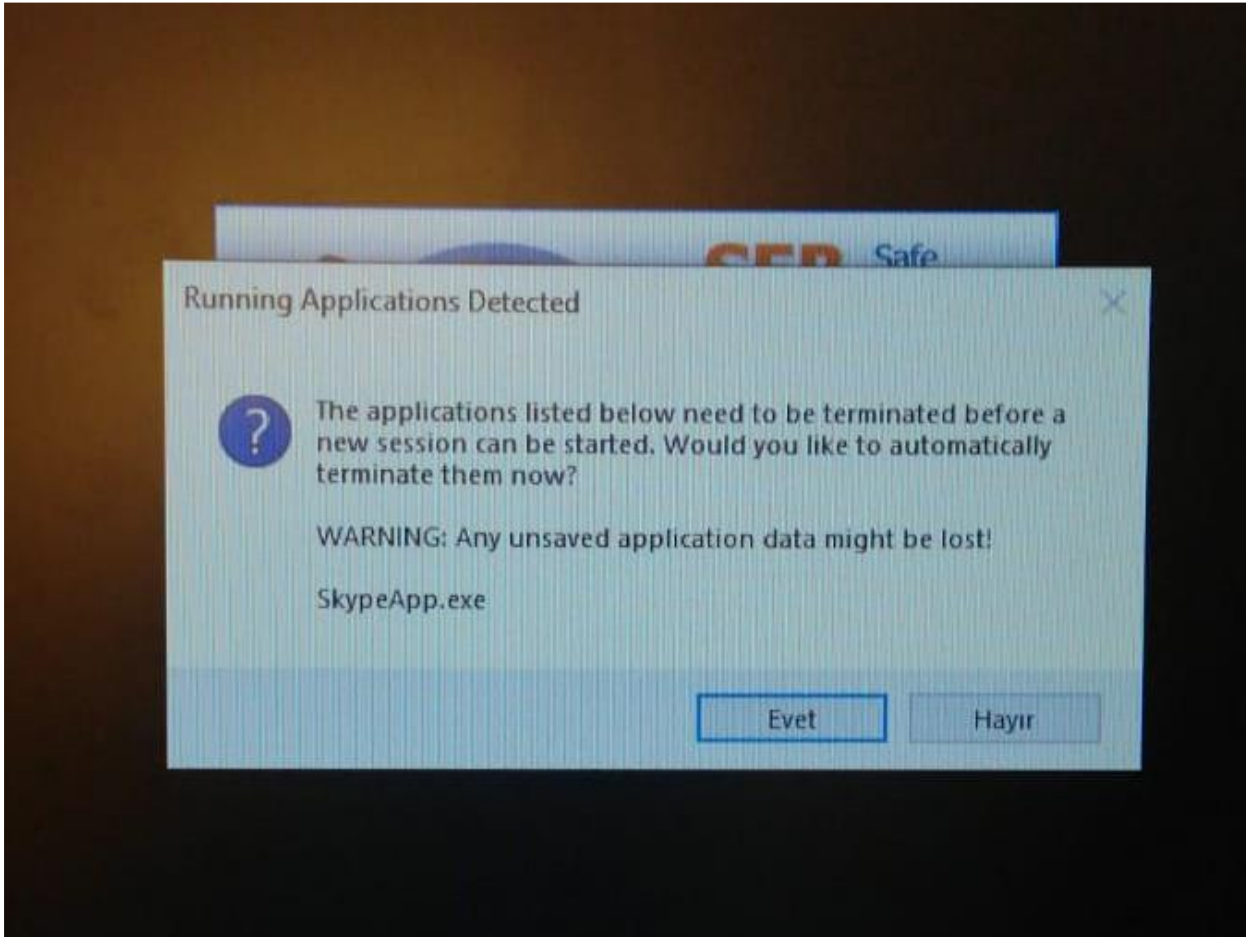
12. Bu değişikliği kaydetmek için, üstteki menüde File'a basın ve ardından Savesettings'e basın.



13. Őimdi, sınavınıza girmek iin, masaüstünüzdeki Safe Exam Browser'ı bilgisayarın menüsünden açın.



14. Karşınıza şöyle bir ekran çıkabilir. Evet'e basın.



15. Artık Odtuclass'tasınız. Log in kısmından, bilgilerinizle giriş yapın.

You are not logged in. (log out)

LOGIN

Username
[input field]

Password
[input field]

Remember username

Log in

Lost password?

Welcome to ODTÜClass. This site serves as the learning management system for ODTÜ.

You can login to ODTÜClass with your METU user-id and password. At the beginning of each semester, all courses will be added to ODTÜClass and all instructors will be authorized for their course(s). Students will be added to their courses throughout the semester as the system is synchronized with Student Affairs Information System (OIBS).

ODTÜClass offers rich learning and communication tools to faculty members and students. You can manage several activities such as sharing sources, requesting assignments and Turnitin assignments in which it is possible to check plagiarism, sharing quizzes, sending e-mail and more. Also, you can use gradebook to grade students' academic activities and announce their grades.

For the disclosure text for Personal Data Protection for distance learning please click [HERE](#).