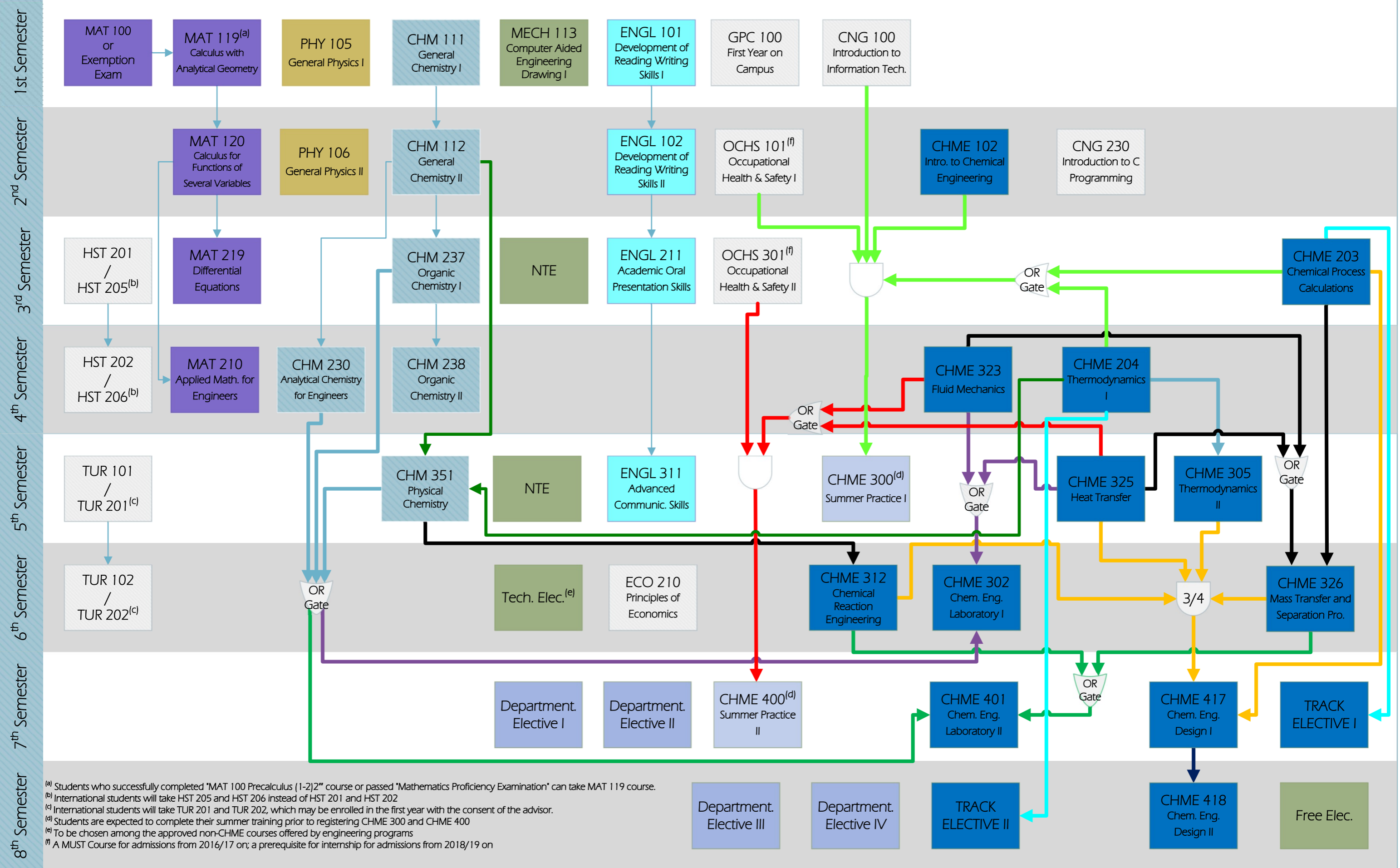


METU Northern Cyprus Campus Chemical Engineering Program Prerequisites Flowchart

Abbreviations: Elec.: Elective Course, NTE: Non-Technical Elective

Stand: 20191008v2



^(a) Students who successfully completed "MAT 100 Precalculus (1-2)" course or passed "Mathematics Proficiency Examination" can take MAT 119 course.

^(b) International students will take HST 205 and HST 206 instead of HST 201 and HST 202

^(c) International students will take TUR 201 and TUR 202, which may be enrolled in the first year with the consent of the advisor.

^(d) Students are expected to complete their summer training prior to registering CHME 300 and CHME 400

^(e) To be chosen among the approved non-CHME courses offered by engineering programs

^(f) A MUST Course for admissions from 2016/17 on; a prerequisite for internship for admissions from 2018/19 on