

## **DERYA NERELİ**

**Room:** RZ-036

**Phone:** +90-392-661 -2905

**e-mail:** dnereli@metu.edu.tr

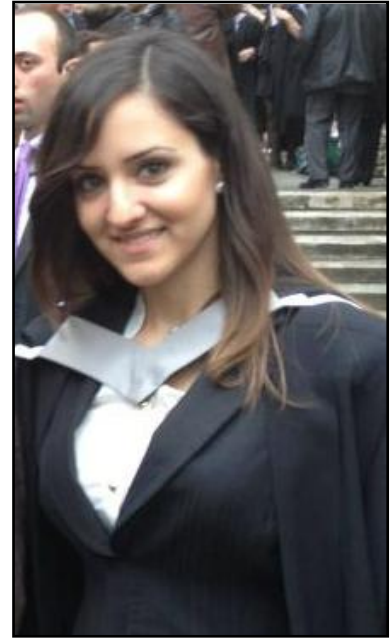
### **Taught Courses**

Introduction to Structural Analysis CVE 323

Engineering Mechanincs/Statics CVE 221

Design of Steel Structures CVE 485

Mechanics of Materials-Strength CVE 224



### **EDUCATION**

*2010-2011*

IMPERIAL COLLEGE LONDON  
(Advanced Structural Engineering)  
Msc in General Structural Engineering

*2005- 2010*

Middle East Technical University, NCC  
Bs- Major in Civil Engineering

### **WORK EXPERIENCE**

*2009*

Planing And Construction Office/ Nicosia-Cyprus  
Project Department- Structural Design and Analysis

*2008*

KORMAN Construction LTD. /Kyrenia-Cyprus  
Construction Site- Intern Site Chief

### **PROJECTS**

*Spring 2010- METU*

Final Project: Structural Design of Five Storey Concrete Building

*Summer 2011 –Imperial College London*

- Minor Projects: 1. Conceptual Design and Construction of Steel Roof for Train Station  
2. Conceptual Design and Construction of Steel and Concrete Bridges

Major Project: Advanced Detailed Design and Construction of Composite Bridge in Dublin/Ireland.